

VESDA® 19" Subrack Enclosure



Features

- Dual hinged glass door provides easy access to VESDA modules and termination boards
- Second door provides access to the termination boards
- Designed for easy mounting
- Multiple knock-outs for easy cable entry
- Holds up to 3 subracks
- Full size, lockable window and door

Glass-Fronted 19" Subrack Enclosure

To compliment the VESDA range of detectors, displays and programmers a 19 inch Subrack enclosure is available. The 19 inch rack enclosure is designed to house up to 12 display and/or programmer modules, VESDA^{net} sockets, or relay only modules in a wide variety of configurations to suit the particular requirements of a site where centralized control and monitoring of the VESDA LaserPLUS system is required.

Modular System

VESDA Aspirating Smoke Detectors are available in a wide range of configurations to suit the particular requirements of each site. The system is modular with Display and Programmer Modules located in the most convenient location. The backbone to this modularity is VESDA^{net}, a fault tolerant RS485 communications loop which links all elements of the LaserPLUS system together.

Mounting Options

Display and Programmer modules can be mounted in a Detector Enclosure, in a Remote Box or in a 19 inch Subrack. A Programmer Module can also be mounted in a Hand-held unit which can be temporarily connected to any LaserPLUS Detector.

Details of these standard mounting options are given in the Detector, Display and Programmer Data sheets.

Relay Signalling

Each Display Module can be configured to drive relays which can be used for reliable (fault tolerant) signalling of Fire and Fault conditions to external systems.

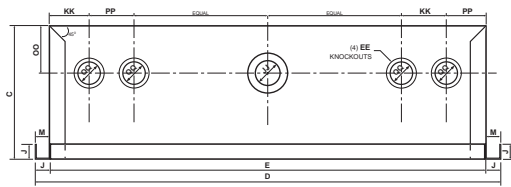
Standard Display Modules can drive 7 relays while Scanner Display Modules can be configured to drive 7 or 12 relays. Relay functionality is fully configurable according to site requirements.

19" Rack Enclosure

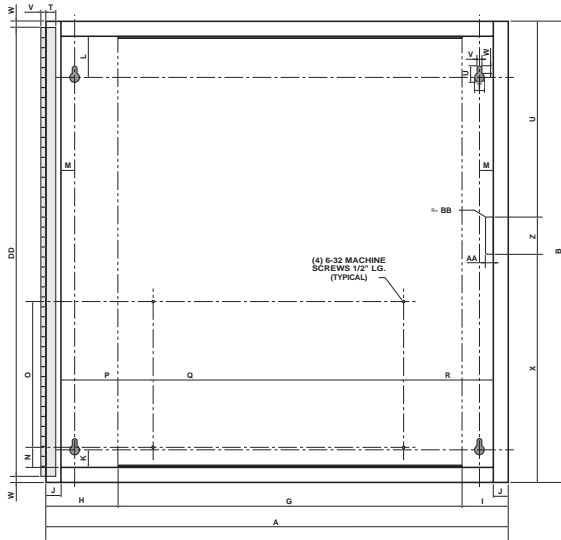
19" Subracks can be installed in glass fronted enclosures. 19" Subracks are mounted on a swing frame for convenient connection of all the cables.

Cable entry for 24 VDC power, VESDA^{net} connection and interfacing to the relays is provided by multiple knock-outs on all four sides of the box. 19" Subracks and blank panels must be ordered separately. Each enclosure will accommodate up to 3 subracks. If utilizing only 1 or 2 racks the VESDA Power Supply (VPS-100-US-xxx) can also be mounted in the enclosure.

VESDA® 19" Subrack Enclosure

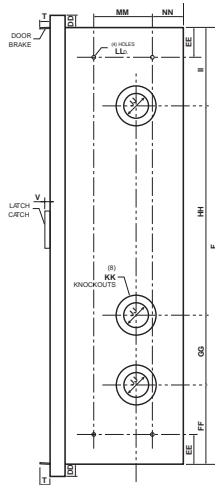


(TOP VIEW)



CABINET (FRONT VIEW)

SCALE: 1/2" = 1'-0"



(SIDE VIEW)

Dimensions	inches
A	23-3/16
B	32-1/8
C	6-1/16
D	21-7/8
E	21-11/16
F	21-15/16
G	17-1/4
H	3-5/8
I	2-5/16
J	3/4
K	7/8
L	2-1/16
M	11/16
N	1
O	7-5/16
P	4-5/8
Q	12-9/16
R	4-1/2
S	S
T	1/2
U	13/16
V	1/4
W	5/16
X	11-7/16
Y	9-13/16
Z	1-7/8
AA	3/8
BB	3/32
CC	22-1/2
DD	5/8
EE	1-1/2
FF	4
GG	3-1/2
HH	10-1/2
II	3-15/16
JJ	1-1/4
KK	2
LL	3/16
MM	2-15/16
NN	1-9/16
OO	2-3/8
PP	2-1/4
QQ	QQ
RR	RR
SS	SS
TT	TT
UU	UU
VV	VV
WW	WW
XX	XX
YY	YY
ZZ	ZZ

Specifications

Construction:

- NEMA 1 Rating
- 16 gauge cold roll steel
- Fully welded and ground
- Double knockouts
- Continuous hinges with stainless steel pins
- Full size window kit – lockable
- Door – lockable (keyed alike with window)

Mounting:

- Key hole mounting

Finish:

- 2-part polyurethane – bake on textured finish

Color:

- Light grey

Locks:

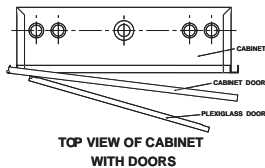
- Keyed alike Chicago locks

Blanking Plates:

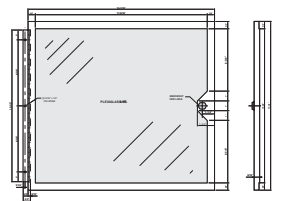
- 14 gauge cold roll steel
- Light grey matching color
- Single plate – 19 x 5 1/4"
- Double plate – 19 x 10 1/2"
- Enclosure requires 4 10/32" screws for mounting 19" rack and/or blanking plates.

Ordering Information:

- | | |
|----------------------|---------|
| Rack Enclosure | VRE-100 |
| Blank Plate (single) | VRE-001 |
| Blank Plate (double) | VRE-002 |

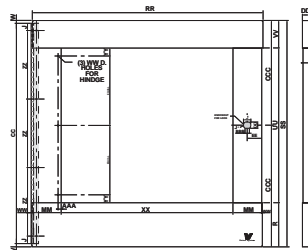


TOP VIEW OF CABINET WITH DOORS



(FRONT VIEW) (SIDE VIEW)
PLEXIGLASS DOOR

SCALE: 1/4" = 1'-0"



(FRONT VIEW) (SIDE VIEW)
CABINET DOOR

SCALE: 1/4" = 1'-0"

www.xtralis.com

The Americas +1 781 740 2223 Asia +852 2297 2438 Australia and New Zealand +61 3 9936 7000
Continental Europe +41 55 285 99 99 UK and the Middle East +44 1442 242 330

The contents of this document are provided on an "as is" basis. No representation or warranty (either express or implied) is made as to the completeness, accuracy or reliability of the contents of this document. The manufacturer reserves the right to change designs or specifications without obligation and without further notice. Except as otherwise provided, all warranties, express or implied, including without limitation any implied warranties of merchantability and fitness for a particular purpose are expressly excluded.

This document includes registered and unregistered trademarks. All trademarks displayed are the trademarks of their respective owners. Your use of this document does not constitute or create a licence or any other right to use the name and/or trademark and/or label.

This document is subject to copyright owned by Xtralis AG ("Xtralis"). You agree not to copy, communicate to the public, adapt, distribute, transfer, sell, modify or publish any contents of this document without the express prior written consent of Xtralis.

Doc. no. 13964_03

Part: 18625

